

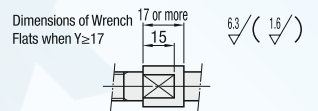
Cantilever Shafts - Piloted Thread with Retaining Ring Groove - Standard



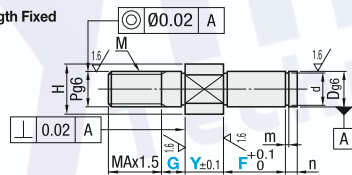
Standard



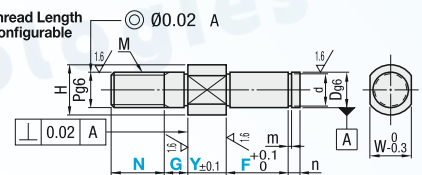
Type		M	S
Thread Length Fixed	Thread Length Configurable	Material	Surface Treatment
DFXCA	DFXNCA	S45C Equivalen	Black Oxide
DPFXCA	DPFXNCA		Electroless Nickel Plating
DSFXCA	DSFXNCA	SUS304	-
DHFXCA	-	SCM435 Equivalent Hardness: 35 - 40HRC	Black Oxide



Thread Length Fixed



Thread Length Configurable



This type may have centring holes depending on dimensions.

Part Number		Dg6		1mm Increment					M		d									
Type	No.			Y	F	G	N	Pg6	(Coarse)	H	W	Ref. Dim.	Tolerance	m	n					
Thread Length Fixed DFXCA DPFXCA DSFXCA DHFXCA (D≥6)	3	3	-0.002 -0.008	2~30	3~50	3~8	3~6	3	M 3	7	5	2	+ 0.060 0	0.5	2					
	3A																			
	4	4	-0.004 -0.012							4~8	4	M 4		8		6	3			
	4A																			
	5	5					5~10	5	M 5	9	7	4	+ 0.075 0	0.7						
	5A																			
	6	6					6~12	6	M 6	10	8	5								
	6A																			
	8	8	-0.005 -0.014	2~60	5~100	5~10	8~16	8	M 8	12	10	7	+ 0.090 0	0.9		3				
	8A																			
10	10								10~20	10	M10	15	13	9.6	0 + 0.090					
10A																				
12	12	-0.006 -0.017	2~60	5~15	12~24	12	12	M12	17	14	11.5	11.5	0 + 0.110	1.15	4					
13	13																			
15	15										20	20		14.3						
16	16										21	21		15.2						
17	17										23	20		16.2						
18	18										17									
20	20	-0.007 -0.020	4~75	10~150	5~20	20	20~40	20	M20	26	24	19	0 + 0.210	1.35	5					
20A																				
22	22										16	M16	28	25		21				
22A											16	M16								
25	25										20	M20	31	27		23.9				
25A											16	M16								
30	30										20	M20	36	32		28.6				
30A											16	M16								

DHFXCA is applicable to D6 or larger specifications.

N is available for Thread Length Configurable Type only.

Basic Specifications

- Shaft Retaining Method - Shaft Retaining Method
- Retainer Shape - Wrench Flats
- Bearing Retaining Method - With Retaining Ring Grooves

ORDERING GUIDE



DFXCA12 - 12 - F15 - G6

L F G

www.dymextech.com
india@dymextech.com

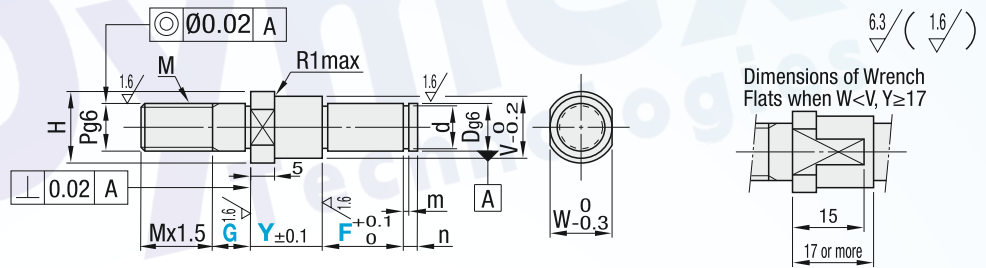
Cantilever Shafts - Piloted Thread with Retaining Ring Groove - Standard



Stepped



Type	M Material	S Surface Treatment
DFXDA	S45C	Black Oxide
DPFXDA	Equivalen	Electroless Nickel Plating
DSFXDA	SUS304	-



This type may have centring holes depending on dimensions.

Part Number		Dg6		1mm Increment			Pg6	M (Coarse)	V	H	W	d		m	n															
Type	No.			Y	F	G						Ref. Dim.	Tolerance																	
DFXDA DPFXDA DSFXDA	3	3	-0.002 -0.008	7~30	3~50	3~8	3	M 3	5	7	5	2	+ 0.060 0	0.5	2															
	3A								9	11	9																			
	4	4	-0.004 -0.012				5~100	5~10	5~15	4	M 4	6	8	6		3	+ 0.075 0	0.7												
	4A											10	12	10																
	5	5	-0.005 -0.014							7~60	10~100	5~20	5	M 5		7	9	7	4	0 + 0.090	0.9									
	5A															11	13	11												
	6	6	-0.006 -0.017										10~100	5~20		5~20	6	M 6	8	10	8	5	0 + 0.110	1.15						
	6A																		12	14	12									
	8	8	-0.007 -0.020														10~100	5~20	5~20	8	M 8	10	12	10	7	+ 0.090 0	0.9			
	8A																					14	16	14						
	10	10	-0.007 -0.020																	10~100	5~20	5~20	10	M10	13	15	13	9.6	0 + 0.090	3
	10A																								18	20	17			
	12	12	-0.006 -0.017	10~100	5~20	5~20									12								M12	15	17	14	11.5	0 + 0.110	1.15	
	12A																							16	18	15				
	13	13	-0.006 -0.017				10~100	5~20	5~20						12								M12	18	20	20	14.3	0 + 0.110	4	
	13A																							19	21	21				
	15	15	-0.006 -0.017							10~100	5~20	5~20			12								M12	20	21	21	15.2	0 + 0.110	4	
	15A																							21	22	22				
	16	16	-0.006 -0.017										10~100	5~20	5~20	12							M12	21	23	20	16.2	0 + 0.110	4	
	16A																							22	24	24				
	17	17	-0.006 -0.017													10~100	5~20	5~20	12				M12	24	26	24	19	0 + 0.210	1.35	
	17A																							26	28	25				
	18	18	-0.006 -0.017																10~100	5~20	5~20	12	M12	26	28	25	21	0 + 0.210	1.35	
	18A																							29	31	27				
	20	20	-0.006 -0.017	10~100	5~20	5~20																20	M20	34	36	32	28.6	0 + 0.210	1.65	
	20A																							36	38	34				
	22	22	-0.006 -0.017				10~100	5~20	5~20													20	M20	36	38	34	28.6	0 + 0.210	1.65	
	22A																							38	40	36				
	25	25	-0.006 -0.017							10~100	5~20	5~20										20	M20	38	40	36	28.6	0 + 0.210	1.65	
	25A																							40	42	38				
30	30	-0.006 -0.017	10~100										5~20	5~20	20							M20	40	42	38	28.6	0 + 0.210	1.65		
30A																							42	44	40					

When W < V, wrench flats W reaches O.D.V.

Basic Specifications

- Shaft Retaining Method - Shaft Retaining Method
- Retainer Shape - Wrench Flats
- Bearing Retaining Method - With Retaining Ring Grooves

ORDERING GUIDE



L - F - G - N

DFXCA12 - 12 - F15 - G6

www.dymex tech.com
india@dymex tech.com

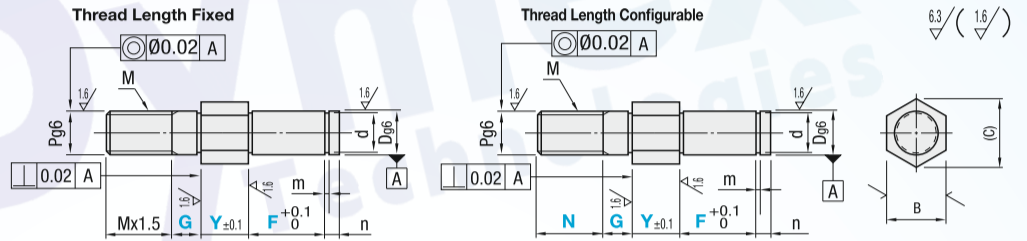
Cantilever Shafts - Piloted Thread with Retaining Ring Groove - Standard



Hex



Type		Material	Surface Treatment
Thread Length Fixed	Thread Length Configurable		
DLXCA	DLXNCA	S45C	Black Oxide
DLXCA	DPLXNCA	Equivalen	Electroless Nickel Plating
DSLXCA	DSLXNCA	SUS304	-



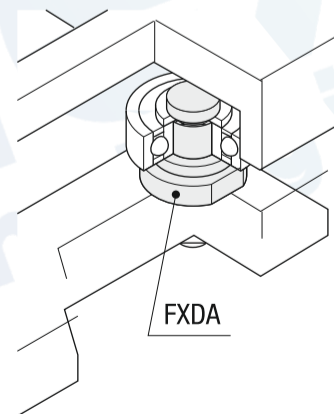
This type may have centering holes depending on dimensions

Part Number	Type	No.	Dg6	1mm Increment				Pg6	M (Coarse)	H	W	d		m	n	
				Y	F	G	• N					Ref. Dim.	Tolerance			
Thread Length Fixed DLXCA DPLXCA DSLXCA (D≥6)	3	3	-0.002 -0.008	2~30	3~50	3~8	3~6	3	M 3	6	6.9	2	+ 0.060 0	0.5	2	
	4	4	-0.004 -0.012				4~8	4	M 4			3				
	5	5					5~10	5	M 5			4				+ 0.075 0
	6	6	-0.005 -0.014	5~100	5~10	6~12	6	M 6	8	9.2	5	+ 0.090 0 -0.090	0.9	3		
	8	8				8~16	8	M 8	10	11.5	7					
	10	10				10~20	10	M10	13	15.0	9.6					
	Thread Length Configurable DLXNCA DPLXNCA DSLXNCA	12	12	-0.006 -0.017	2~60	5~15	12~24	12	M12	14	16.2	11.5	12.4	0 -0.110	1.15	4
		13	13										14.3			
		15	15										15.2			
		16	16	-0.007 -0.020	4~75	5~20	20~40	16	M16	24	27.7	19	0 -0.210	1.35	5	
		17	17													17
		18	18													17
20		20	-0.007 -0.020	4~75	5~20	20~40	16	M16	27	31.2	23.9	0 -0.210	1.65	5		
20A		20													19	
22		22													21	
22A		22	-0.007 -0.020	4~75	5~20	20~40	16	M16	27	31.2	23.9	0 -0.210	1.65	5		
25		25													27	
25A		25													27	
30	30	-0.007 -0.020	4~75	5~20	20~40	16	M16	32	36.9	28.6	0 -0.210	1.65	5			
30A	30													16		

N is available for Thread Length Configurable Type only.

Alterations	Y Dimension Tolerance	Four Wrench Flats	Retaining Ring Set																		
	Code	YKC		WSC	SET																
Spec.	Changes Y dimension tolerance to ±0.05. • Applicable to all types. Ordering Code YKC	Changes from two wrench flats to four wrench flats. • Applicable to Standard and Stepped Types. Ordering Code WSC	Retaining Ring applicable to each shaft diameter is included. Ordering Code SET • Applicable to all types. Retaining Ring Shape No.=3 ~ 8; E Type Retaining Ring No.=10 ~ 30A; C Type Retaining Ring Retaining Ring Material <table border="1"> <thead> <tr> <th colspan="2">Cantilever Shafts</th> <th>Retaining Ring</th> </tr> <tr> <th>Material</th> <th>Surface Treatment</th> <th>Material</th> </tr> </thead> <tbody> <tr> <td>S45C</td> <td>Black Oxide</td> <td>Spring Steel</td> </tr> <tr> <td>SUS304</td> <td>Electroless Nickel Plating</td> <td>SUS304-CSP</td> </tr> <tr> <td>SCM435</td> <td>Black Oxide</td> <td>Spring Steel</td> </tr> <tr> <td></td> <td>Electroless Nickel Plating</td> <td>SUS304-CSP</td> </tr> </tbody> </table>	Cantilever Shafts		Retaining Ring	Material	Surface Treatment	Material	S45C	Black Oxide	Spring Steel	SUS304	Electroless Nickel Plating	SUS304-CSP	SCM435	Black Oxide	Spring Steel		Electroless Nickel Plating	SUS304-CSP
Cantilever Shafts		Retaining Ring																			
Material	Surface Treatment	Material																			
S45C	Black Oxide	Spring Steel																			
SUS304	Electroless Nickel Plating	SUS304-CSP																			
SCM435	Black Oxide	Spring Steel																			
	Electroless Nickel Plating	SUS304-CSP																			

Example



Basic Specifications

- Shaft Retaining Method - Shaft Retaining Method
- Retainer Shape - Wrench Flats
- Bearing Retaining Method - With Retaining Ring Grooves



DLXNCA20 - 25 - F30 - G10 - N40
DFXCA25 - 30 - F15 - G8 - YKC

