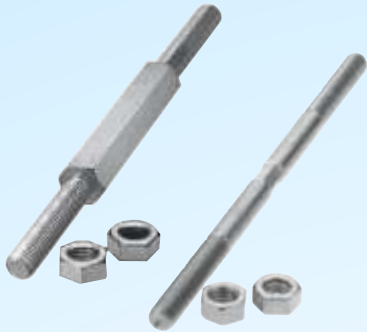


Rod End Coupling Rods Both Ends Threaded

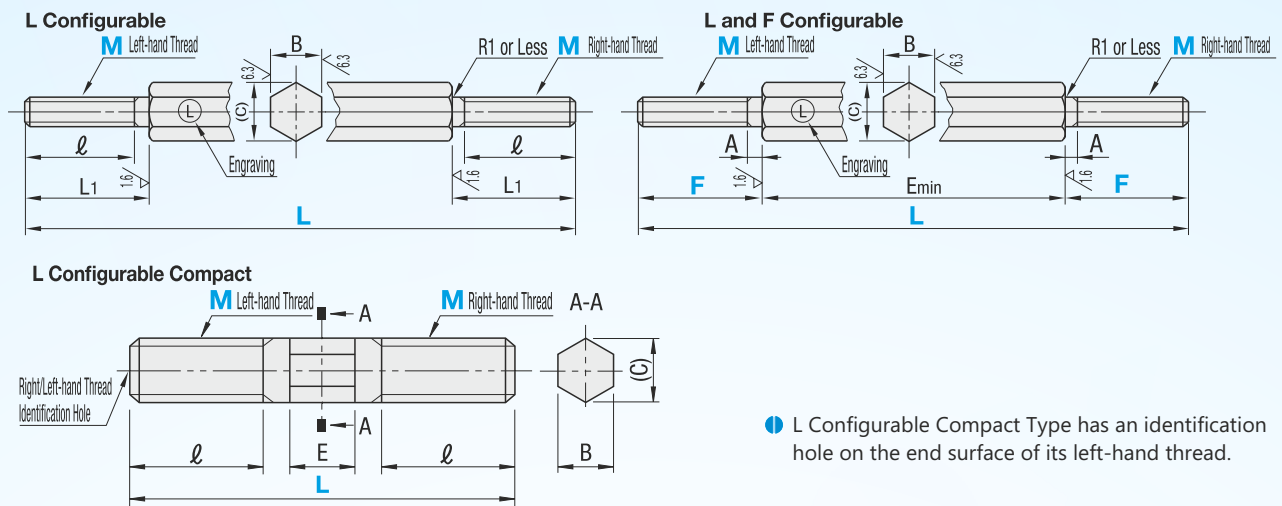
When assembling rod end bearings, please use PMC (Fine Thread) alteration as required.

Both Ends Threaded



Type			M Material	S Surface Treatment	A Accessory	
L Configurable	L Configurable	L Configurable Compact	M Material	S Surface Treatment	M Material	S Surface Treatment
DLBRBF	DLBRBFF	-	S45C Equivalent	Black Oxide	SS400	Trivalent Bright Chromate
DLBRFN	DLBRFNF	DLBRSM		Electroless Nickel Plating		
DSLBRFN	DSLBRFNF	DSLBR5	DSUS304	-	SUS304 Equivalent	-

25 / (6.3 / 1.6)



L Configurable Compact Type has an identification hole on the end surface of its left-hand thread.

Both Ends Threaded, L Configurable

Part Number	M (Coarse)	L 1mm Increment	L1	l	B	(C)
L Configurable DLBRBF DLBRFN DSLBRFN DE SLBRFN is available for M3 ~ 18 only.	3	25~39	8	7	6	6.9
		40~300	15	14		
	4	35~49	12	10	7	8.1
		50~400	20	18		
	5	40~59	13	11	8	9.2
		60~600	25	23		
	6	50~69	17	15	10	11.5
		70~600	30	28		
	8	60~89	23	20	13	15
		90~1000	40	37		
	10	70~109	28	25	17	19.6
		110~1000	50	47		
12	80~129	33	30	19	21.9	
	130~1000	60	56			
14	130~1000	60	56	21	24	
16	170~1000	80	76	24	27.7	
18	170~1000	80	76	27	31.2	
20	170~1000	80	76	30	34.6	
22	170~1000	80	76	32	36.9	

When assembling rod end bearings, check M-Pitch.

Both Ends Threaded, L Configurable Compact

Part Number	M (Coarse)	L 1mm Increment	L1	E	B	(C)
L Configurable Compact DLBRSM DSLBR5	3	20~39	7	3	2.5	2.9
		40~100	17	3		
	4	20~39	7	4	3	3.4
		40~100	17	4		
5	30~59	10	6	4	4.6	
	60~150	25	6			
6	30~59	10	6	5	5.8	
	60~150	25	6			
8	50~89	18	8	6	6.9	
	90~150	38	8			
10	50~89	18	8	8	9.2	
	90~150	38	8			
12	60~129	22	10	10	11.6	
	130~200	56	10			
16	75~169	28	10	13	15	
	170~300	76	10			

When assembling rod end bearings, check M-Pitch.

Both Ends Threaded, L and F Configurable

Part Number	M (Coarse)	L 1mm Increment	F 1mm Increment	L1	l	(C)	E min
L and F Configurable DLBRBFF DLBRFNF DSLBRFNF	3	19~300	5~15	1.5	6	6.9	10
		22~400	6~20				
	4	25~600	7~25	1.5	8	9.2	14
		32~600	9~30				
	5	38~1000	12~40	2.5	13	15	18
		44~1000	15~50				
	6	54~1000	18~60	3.0	17	21.9	25
		60~1000	21~70				
	7	66~1000	24~80	3.0	21	24	18
		72~1000	27~90				
	8	85~1000	30~100	4.0	30	34.6	25
		91~1000	33~110				

L ≥ 2F + Emin. When assembling rod end bearings, check M-Pitch.

Not applicable to DLBRSM and DSLBR5.

Alterations	Code	Spec.
<p>PMC (Fine)</p>	PMC	Changes both threads to fine threads. Alteration is available for M10, 14, 18, 20 and 22 only. Ordering Code PMC
<p>PC Left-hand Thread, QC Right-hand Thread</p>	PC QC	Adds an undercut to A part. Ordering Code PC Applicable to DLBRBFF, DLBRFNF, DSLBRFNF only.

Basic Specifications

Type - Both Ends Threaded

