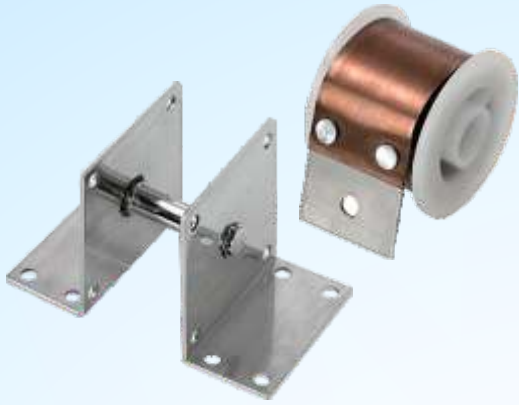
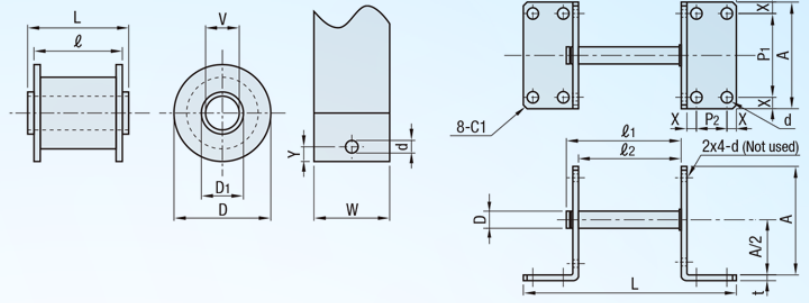


Constant Load Flat Coil Spring



DCFS (Constant Force Springs)

DCFSB (Brackets for Constant Force Springs)



M Material	
Main Body	Drum
SUS301EH	Polypropylene

M Material		S Surface Treatment	A Accessory
Main Body	Shaft	Shaft	Retaining Ring-C Type (SUS304)
SUS430	SWCH Equivalent	Nickel Plating	

Material of the Drums: DCFS0.1, DCFS0.2 and DCFS5.2 are polyethylene, DCFS3.5 is ABS.

Part Number		Max Stroke	Durability Times	Spring Plate Thickness	Accessory Plate Thickness	D	D1	V	ℓ	L	W	d	Y				
Type	Load (kgf)																
DCFS	0.1	500	50,000	0.1	1.0	26	8.2	5.2	17	18	10	3.2	5				
	0.2		35,000	0.13		34	13		25.6					27.6	20		
	0.4	1,000	37,000	0.15		34	14		30.6					32.6	25		
	0.6		25,000			38			26.2					27.6	20		
	0.8	1,500	25,000	0.2		44	13		40.6					42.6	35		
	1	1,000	19,000			34			25.6					27.6	20		
	1.2	1,500	34,000	0.25		34	14		30.6					32.6	25		
	1.4	1,000	9,000			38			26.2					27.6	20		
	1.8	1,500	9,000	0.3		44	14		25.6					27.6	20		
	2	1,000	6,000			0.25			38							10.2	30.6
	2.2		8,000	0.3		44	14		26.2					27.6	20		
	2.4		6,000	0.25		38	10.2		25.6					27.6	20		
	2.6		9,000	0.2		44	14		30.6							32.6	25
	2.9		20,000	0.3		2.0	54		16					46	49	40	6.5
	3.2		8,000	0.45		1.0	44		14					35.6	37.6	30	4.5
	3.5		21,000	0.3		2.0	54		16					56	58	50	6.5
	3.9		8,000	0.3		1.0	44		14					40.6	42.6	35	4.5
	4.7		9,000	0.3		2.0	44		14					50.6	52.6	45	6.5
5.2	1,500		6,000	0.45	1.0	60	16	37	40	30	4.5						
5.7	1,000	8,000	0.3	2.0	44	14	55.6	57.6	50	6.5							

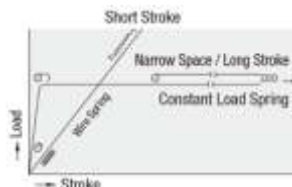
[!] All load tolerances are from 0 to +15%.

Part Number		t	A	B	P ₁	P ₂	X	d	D	ℓ ₁	ℓ ₂	L	Applicable Constant Force Spring			
Type	No.															
DCFSB	0.1	6	45	22.5	35	12.5	5	4.5	5	-24.9	20.5	68.5	DCFS0.1	DCFS0.2		
	0.4		55	27.5	43	15.5	6	5.5	10	-35	30.4	89.4	DCFS0.4	DCFS0.6		
	0.8		55	27.5	43	15.5				-40	35.4	94.4	DCFS0.8	DCFS1.8		
	1		60	30	48	18				-35	30.4	94.4	DCFS1.0	DCFS2.0		
	1.2		65	32.5	53	20.5				-50	45.4	114.4	DCFS1.2	DCFS3.9		
	2.2		65	32.5	53	20.5				-35	30.4	99.4	DCFS2.2			
	2.4		60	30	48	18				-40	35.4	99.4	DCFS2.4			
	2.6		65	32.5	53	20.5				-40	35.4	104.4	DCFS2.6			
	2.9		75	37.5	63	25.5				-56	51.4	130.4	DCFS2.9			
	3.2		65	32.5	53	20.5				-45	40.4	109.4	DCFS3.2			
	3.5		75	37.5	63	25.5				-65.4	60.8	139.8	DCFS3.5			
	4.7		65	32.5	53	20.5				-60	55.4	124.4	DCFS4.7			
	5.2		85	42.5	71	28.5				7	6.5	-47.4	42.3	132.3	DCFS5.2	
	5.7		65	32.5	53	20.5				6	5.5	-65	60.4	129.4	DCFS5.7	

Basic Information

[Features]

A long strip of material that is wound into a role. When the strip is extended, the inherent stress resists the loading force at a constant rate. Once it reaches the maximum load, the resistance is constant regardless of the stroke. (The drums reach the max. output only after approximately half a rotation.)



ORDERING GUIDE



DCFS2.4
DCFSB2.4

www.dymextech.com
india@dymextech.com