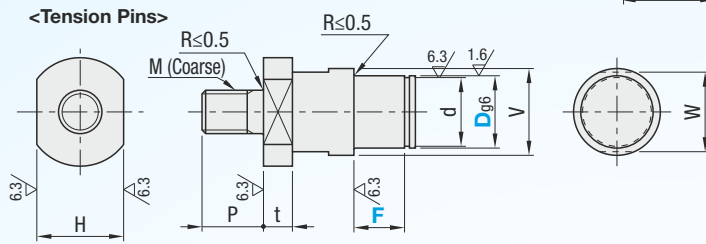
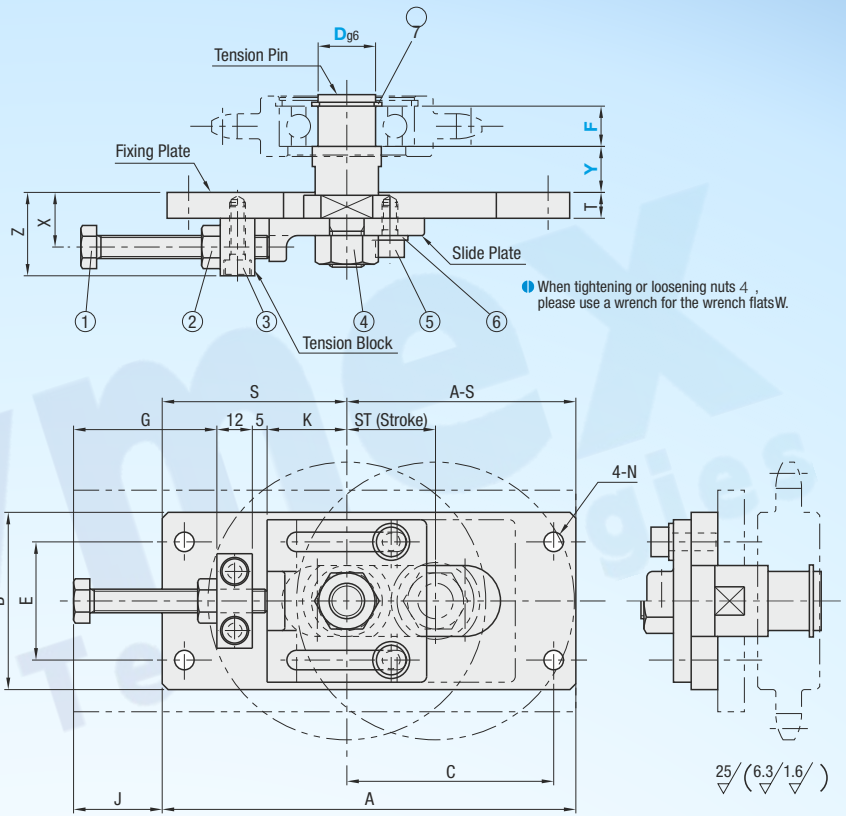
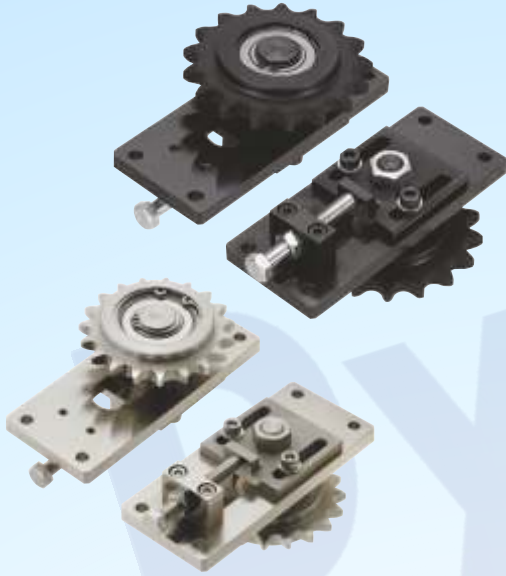


Tensioner Unit-Slotted Hole Type/ Adjustment Screw Type

● **Features:** Tensioner units applicable on both driven side and middle section. Can be used for chain or belt drive.

● **Idler is optional.**



Type	Material				Surface Treatment
	Attachment Plate	Tension Pin	Slide Plate	Tension Block	
DTNSR	SS400-D	S45C	S45C (Precision Casting)	SS400-D	Black Oxide
DTNSN					Electroless Nickel Plating

● Tension Pin Dimension Details

Dg6	V	d	t	P	H	W	M (Coarse)
10	13	9.6	5	13	15	11	M8
12	15	11.5				13	
15	20	14.3		16	20	17	M10
17	22	16.2	8		24	19	
20	24	19		17	24	22	M12

● DTNSR Accessory

Dg6	① Adjustment Screw	② Nut	③ (2 pcs) Hex Socket Head Cap Screw	④ Nut	⑤ (2 pcs) Hex Socket Head Cap Screw	⑥ (2 pcs) Flat Washer	⑦ (2 pcs) C Type Retaining Ring
10			CB4-16	LBNR8	CB5-10	PWF5	STWN10
12	M6x55	LBNR6					STWN12
15				LBNR8	CB5-14		STWN15
17	M8x60	LBNR8	CB5-22	LBNR12	CB6-16	PWF6	STWN17
20							

● DTNSN Accessory

Dg6	① Adjustment Screw	② Nut	③ (2 pcs) Hex Socket Head Cap Screw	④ Nut	⑤ (2 pcs) Hex Socket Head Cap Screw	⑥ (2 pcs) Flat Washer	⑦ (2 pcs) C Type Retaining Ring
10			M4x16	SLBNR8	M5x10	SPWF5	STWN10
12	M6x55	SLBNR6					STWN12
15				SLBNR10	M5x14		STWN15
17	M8x60	SLBNR6	M5x22	SLBNR10	M6x16	SPWF6	STWN17
20							

Part Number		1mm Increment			ST (Stroke)	A	B	T	J	C	E	G	K	S	X	Z	N
Type	Dg6	Y	F														
DTNSR DTNSN	10	10~50	8~50	25	120	50	6	24	55	35	42.0	22.5	57.5	14	21	5.5	
	10											25.5	25.5				
	15	12~60	10~50	25	125	55	9	31	57.5	40	48.5	27	27	19	29	6.6	
	17																
20			30	140	60		30	70									

● When D=10 or 12, Y+F≤80
When D=15 ~ 20, Y+F≤120

For the F dim., specify a value identical to the width of the bearing included with the current idler. (Tolerance of F dim. : 0~+0.1mm)

ORDERING GUIDE



Y - F

DTNSR20 - Y15 Y15
DTNSN15 - Y20 Y20