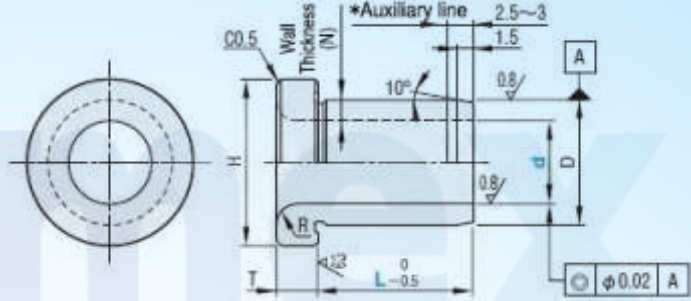


Bushings For Locating Pins - Shouldered, Press Fit Easy Mounting



The inner diameter tolerance of the bushing is highly precise. If a vernier caliper is used for measurement, the result may be smaller than the actual value. It is recommended to use high-precision measuring instruments (such as an inside micrometer or plug gauge) for inspection.

Material No.	Type		M	S	H
	D _{p7}	D _{m7}	Material	Surface Treatment	Hardness
(1)	DC-JBH	DC-JBHM	Equivalent to SUJ2	—	58 HRC or more
(2)	DC-JBHN	DC-JBHMN	Equivalent to SUJ2	Electroless nickel plating	58 HRC or more
(3)	DC-JBHC	DC-JBHMC	Austenitic stainless steel	—	—

If rust prevention is required, please give priority to products with electroless nickel plating surface treatment or made of austenitic stainless steel materials.

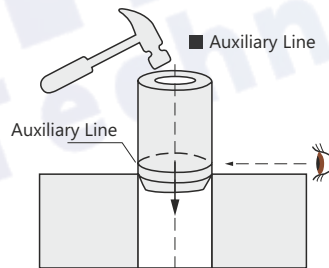
Specification Table

Type	Type	Inner Diameter d	Tolerance	L Selection											Wall Thickness (N)	R	H	T	Outer Diameter D	D Tolerance	
				F7	5	6	7	8	10	12	15	16	20	25						30	35
(p7) DC-JBH DC-JBHN DC-JBHC	2	+0.016		5	6	7	8	10	12					1.5	0.8	9	2.5	5	+0.024	+0.016	
	3	+0.006	5	6	7	8	10	12					2	11		7		+0.012	+0.004		
	4	+0.022	5	6	7	8	10	12	15	16	20			2	1	12	3	8	+0.030	+0.021	
	5	+0.010	5	6	7	8	10	12	15	16	20		2.5	14		10		+0.015	+0.006		
	6		5	6	7	8	10	12	15	16	20	25		2		16		12			
(m7) DC-JBHM DC-JBHMN DC-JBHMC	8	+0.028		5	6	7	8	10	12	15	16	20	25	2	2	19	4	12	+0.036	+0.025	
	10	+0.013	6	7	8	10	12	15	16	20	25	30	2.5	22		15		+0.018	+0.007		
	12			8	10	12	15	16	20	25	30		3	26		18					
	13	+0.034		10	12	15	16	20	25	30			4.5	30		22					
	15	+0.016			12	15	16	20	25	30			5	35		25	+0.043	+0.029			
	16				12	15	16	20	25	30			5	40		26	+0.022	+0.008			
	20	+0.041			12	15	16	20	25	30			5	3		35	30				
25	+0.020				16	20	25	30	35			5		40	35	+0.051	+0.034				

Compared to the m7 type, the p7 type has greater inner diameter shrinkage, so please pay attention during hole machining.

Basic Specification

- I.D. Shape - Circular
- Fixing Support - Not Provided
- Type - Bushing



Bushings with guide lines provide effective horizontal reference and facilitate installation.

Example

