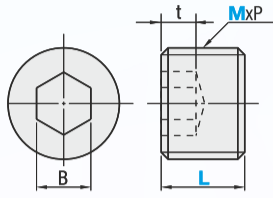


DMSW: Dimple Shape and Dimension

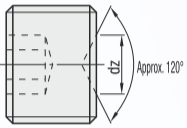
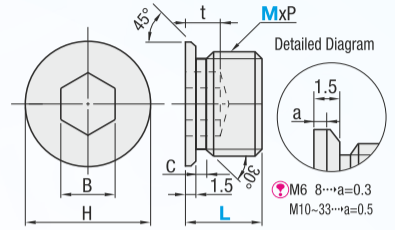
DMSW
DMSWS (Short Type)



DMSWA (Through Hole Type)
DMSWAS (Through Hole, Short)



DMSWZ (With Washer Type)
DMSWZS (With Washer Type)



Part Number	dz max.
DMSW3	1.4
DMSW4	2.0
DMSW5	2.5

Type	M	M Material	H Hardness	S Surface Treatment
DMSW	2.5~10	SCM435	45~53HRC	Black Oxide (JIS B 0207 Class 2)
	12~45	S45C	34~43HRC	
DMSWS	8~33	S45C	34~43HRC	
DMSWA				
DMSWAS				

M Material DMSWZ MSWZS S45C
H Hardness 33~38HRC
S Surface Treatment Black Oxide
 (JIS B 0207 Class 2)

The tip of DMSW3, 4, 5 is a cut point.

Part Number	Type	M	MxP		L	B	t
			M	P			
2.5		2.5	0.45	3	1.3	1.2	
3		3	0.5	3	1.5		
4		4	0.7	4	2		
5		5	0.8	5	2.5		
6		6	1.0	6	3		
8		8	1.25	8	4		
10		10	1.5	5	6		
12		12	1.5 (Fine)	6	5.5		
14		14		8			
16		16		10			
18		18		12			
20		20		14			
22		22		17			
24		24		18			
25		25		10			
26		26		17			
27		27		10			
28		28	17				
30		30	10				
33		33	17				
36		36	10				
38		38	17				
40		40	10				
42		42	17				
45		45	10				

Part Number	Type	M - L	MxP		L	B	t
			M	P			
8-6		8	1.25	4	6	3	
10-6		10	1.5	5			
12-6		12	1.5 (Fine)	6			
14-6		14		6			
16-6		16		8			
18-6		18		10			
20-8		20		12			
22-8		22		14			
24-8		24		17			
25-8		25		8			
26-8		26		14			
27-8		27		17			
28-8		28	8				
30-8		30	14				
33-8		33	17				

Part Number	Type	M - L	MxP		L	B
			M	P		
8-6		8	1.25	4	8	14
10-6		10	1.5	5		
12-6		12	1.5 (Fine)	6		
14-6		14		6		
16-6		16		8		
18-6		18		10		
20-8		20		12		
22-8		22		14		
24-8		24		17		
25-8		25		8		
26-8		26		14		
27-8		27		17		
28-8		28	8			
30-8		30	14			
33-8		33	17			

Part Number	Type	M	MxP		L	B
			M	P		
6		6	1.0	8	12	3
8		8	1.25	10		
10		10	1.5	5		
12		12	1.5 (Fine)	6		
14		14		6		
16		16		8		
18		18		10		
20		20		12		
22		22		14		
24		24		15		
25		25		14		
26		26		15		
27		27		14		
28		28	15			
30		30	14			
33		33	17			

Part Number	Type	M - L	MxP		L	B
			M	P		
8-6		8	1.25	4	8	14
10-6		10	1.5	5		
12-6		12	1.5 (Fine)	6		
14-6		14		6		
16-6		16		8		
18-6		18		10		
20-8		20		12		
22-8		22		14		
24-8		24		17		
25-8		25		8		
26-8		26		14		
27-8		27		17		
28-8		28	8			
30-8		30	14			
33-8		33	17			

Part Number	Type	M	MxP		L	B	H	t	c
			M	P					
6		6	1.0	8	3	9	5	2.5	
8		8	1.25	10	4	11			
10		10	1.5	5	13				
12		12	1.5 (Fine)	6	15				
14		14		17					
16		16		19					
18		18		21					
20		20		23					
22		22		25					
24		24		27					
25		25		28					
26		26		29					
27		27		30					
28		28	31						
30		30	33						
33		33	36						

Basic Specifications

■ Surface Treatment - Black Oxide

Short Type has shorter L dimension and fewer threads, compared with the standard type (DMSW, DMSWA, DMSWZ). Before use, check the load applied to the screw plug and the material of the plate to be tapped

