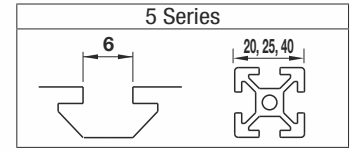
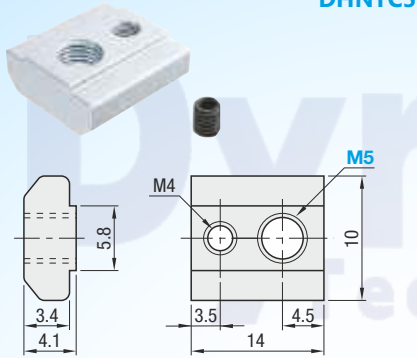


# Pre-Assembly Insertion Nuts / Stoppers for Aluminum Extrusions - Others For 5 Series (Slot Width 6mm)



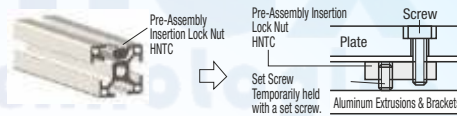
## Pre-Assembly Insertion Lock Nut

### DHNTC5



Reference Tightening Torque (N·m)	
M	S10C Equivalent
5	6.8

• Pre-Assembly Insertion Lock Nut  
The position of post-assembly insertion lock nuts can be fixed temporarily with the set screw.



ORDERING GUIDE

Part Number

DHNTC5 - 5

M Material: S10C Equivalent  
S Surface Treatment: Trivalent Chromate

Part Number	M	Accessory
DHNTC5	5	M4x4 Set Screw for Locking 1 pc.

• Overall length is shorter than Pre-Assembly Insertion Nuts HNTT.  
Suitable for installing sensors or other components closely together.  
• Stopper is not included.

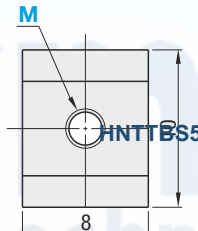
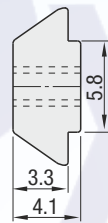
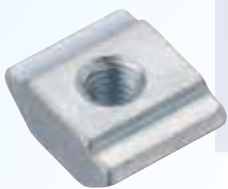
ORDERING GUIDE

Part Number

DHNTC - 5

## Pre-Assembly Insertion Short Nuts

### DHNTJ5 PACK-DHNTJ5



Reference Tightening Torque (N·m)	
M	S10C Equivalent
5	6.8

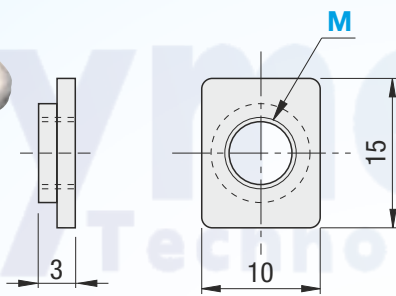
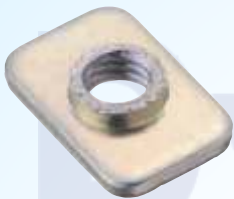
M Material: S10C Equivalent  
S Surface Treatment: Trivalent Chromate

Part Number	M
DHNTJ5 PACK-DHNTJ5	3 4 5

• 100 pcs. per package

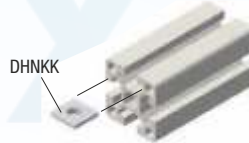
## Pre-Assembly Insertion Short Nuts

### DHNKK5



#### Example

• Pre-Assembly Insertion Nuts



M Material: S10C Equivalent  
S Surface Treatment: Trivalent Chromate

Part Number	M
HNKK5	3 4 5

• 100 pcs. per package  
Insert it into the extrusion upside down.

ORDERING GUIDE

Part Number

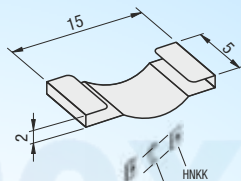
HNKK5 - 5

## Metal Stoppers for Pre-Assembly Insertion Square Nuts

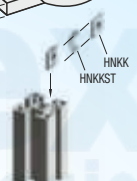
### DHNKKST5



M Material: SUS301



#### Example



Part Number	Applicable Pre-Assembly Insertion Nut
DHNKKST5	DHNKK5

• 100 pcs. per package

ORDERING GUIDE

Part Number

HNKKST5

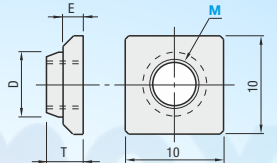
## Pre-Assembly Insertion Nuts Stainless Steel Sheet Metal Type

### DHNTTBS5 (SUS304)



M Material: SUS304

M	T	D
3	2.7	4.3
4	3.4	5.6
5	3.7	6.7



Part Number	M	E	T
DHNTTBS5 (SUS304)	3 4 5	2.0	Above Table

ORDERING GUIDE

Part Number

HNNTBS5 - 5