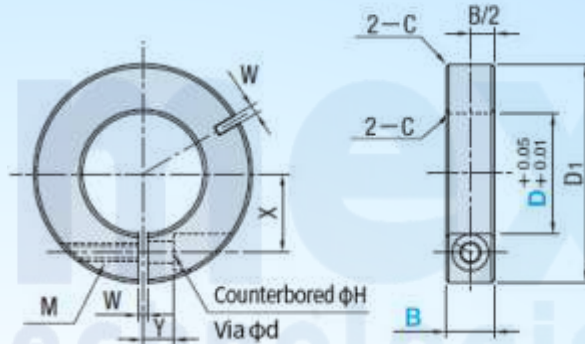
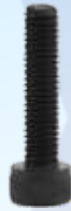
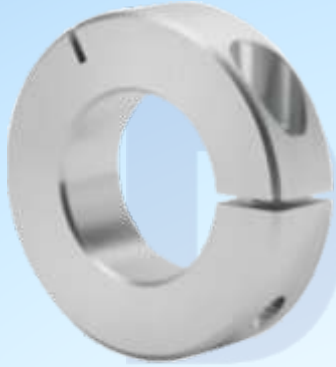
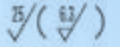


# Shaft Collars Clamp Type



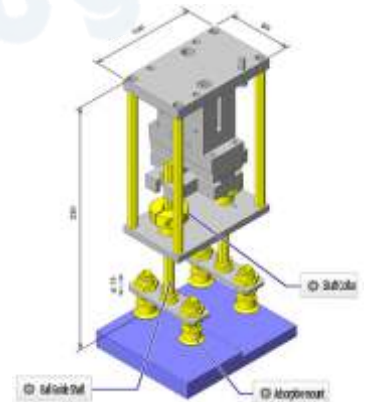
Specifications Overview							
Type	M	Material	S	Surface Treatment	A	D (mm)	B (mm)
DC-SCSAW		6000 Series Aluminum		Clear Anodized	1 hexagon socket head bolt (equivalent to SCM435)	6~30	8~15

① D <sup>+0.05</sup>/<sub>+0.01</sub> is the tolerance before cutting

② The appearance of economy series may have color difference and slight scratches.

Part Number		③ B	D <sub>1</sub>	M Coarse Thread	d	H	(W)	X	Y
① Type	② D								
DC-SCSAW	6	8	20	M3	3.4	6	1	6	4
		10		M4	4.5	7.5			
	8	8	25	M3	3.4	6	15	8	5
		10		M4	4.5	7.5			
	10	8	30	M3	3.4	6	15	9	5
		10		M4	4.5	7.5			
	12	8	30	M3	3.4	6	15	10	6
		10		M4	4.5	7.5			
	15	10	34	M4	4.5	7.5	15	11.5	6
		12	35	M5	5.5	9			
	16	10	35	M5	5.5	9	15	12	7
		12		M6	6.6	12			
	20	12	40	M5	5.5	9	15	14	8
		15	45	M6	6.6	12			
25	12	45	M5	5.5	9	15	17	7	
	15	50	M6	6.6	12				
30	15	55	M6	6.6	12	15	18	10	
							20		

Example Use of Shaft Collars



### Basic Specifications

- Fastening Method - Slit
- Material - 6000 Series Aluminum Alloy
- Specifications - Standard
- Surface Treatment - Clear Anodized
- Side Milling - Not Provided
- Thickness - Standard Type

Please order after selecting part number and parameters according to the selection steps ① to ③

## ORDERING GUIDE



① Type - ② D - ③ B  
DC-SCSAW8 - 10