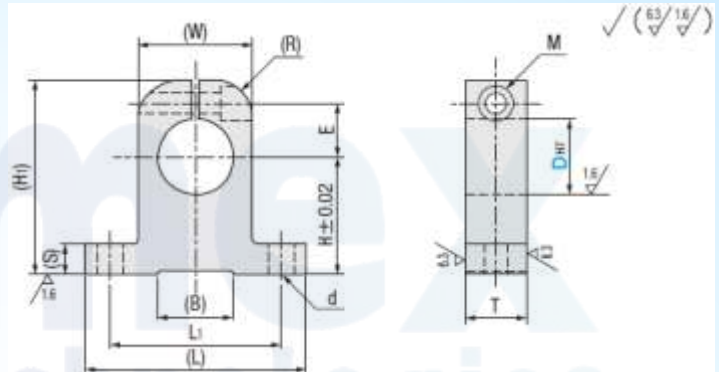


Shaft Supports T-Shaped, Slit, Lightweight, Compact



- After the mounting hole D is machined according to the tolerance H7, it may cause stress deformation of the inner hole.
- Dimensions in () are for reference only (aluminum profiles are processed, and the appearance dimension tolerance is $\pm 0.5\text{mm}$). The specific dimensions are subject to the actual products.

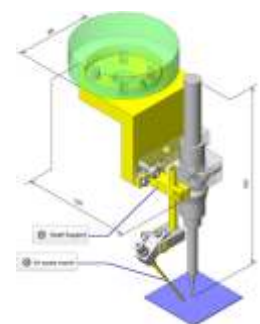
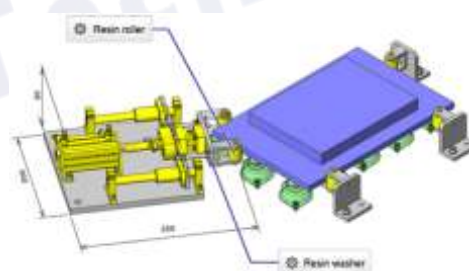
Material Specification Table of Shaft Supports

Type of Shaft Supports	M	Material	S	Surface Treatment	A	Accessories
DC-SHA		Aluminum		Clear Anodized		1 Hexagon Socket Head Bolt

Dimension Specification Table of Shaft Supports

Part Number	Type	D	H	(H ₁)	T	L ₁	d	E	(S)	(R)	(L)	(B)	(W)	Fastening bolt
														M
DC-SHA		10	20	35	11	32	5.5	9.5	6	6	42	14	18	M4
		12	23	39	11	32	5.5	10.5	6	7	42	14	20	
		16	27	45	14	38	5.5	12	6	9	48	18	25	
		20	31	51	16	45	6.6	14	8	10	58	20	30	M5
		25	35	60	18	56	6.6	17	10	13	70	24	38	M6
		30	42	70	20	64	9	21	10	15	80	28	44	

Example Use of Shaft Supports



Basic Specifications

- Shape** - T-Shaped
- Surface Treatment** - Clear Anodize
- Shaft Securing Method** - Slit
- Type** - Machined Product
- Material** - Aluminum Alloy

