

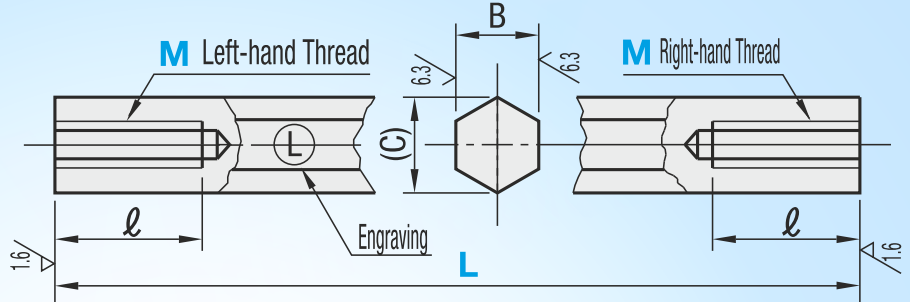
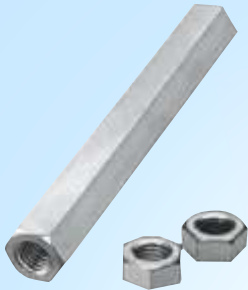
Rod End Coupling Rods

Both Ends Tapped / One End Threaded, One End Tapped



When assembling rod end bearings, please use PMC (Fine Thread) alteration as required.

Both Ends Tapped



Both Ends Tapped

| Part Number | M | L | B | (C) | |
|----------------|----------|---------------|----|------|------|
| Type | (Coarse) | 1mm Increment | | | |
| L Configurable | 3 | 20~300 | 9 | 6 | 6.9 |
| | 4 | 30~400 | 12 | 7 | 8.1 |
| | 5 | 40~600 | 16 | 8 | 9.2 |
| | 6 | 50~600 | 18 | 10 | 11.5 |
| | 8 | 60~1000 | 24 | 13 | 15 |
| | 10 | 70~1000 | 30 | 17 | 19.6 |
| | 12 | 80~1000 | 36 | 19 | 21.9 |
| | 14 | 80~1000 | 36 | 21 | 24.1 |
| | 16 | 100~1000 | 48 | 24 | 27.7 |
| | 18 | 120~1000 | 56 | 27 | 31.2 |
| 20 | 130~1000 | 60 | 30 | 34.6 | |
| 22 | 140~1000 | 66 | 32 | 36.9 | |

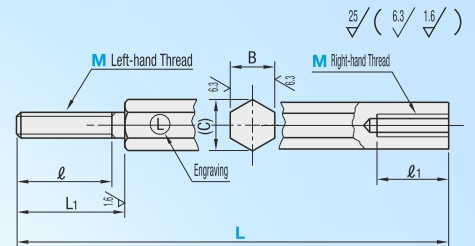
| Type | M Material | S Surface Treatment | A Accessory | |
|---------|------------|----------------------------|-------------------|---------------------------|
| | | | M Material | S Surface Treatment |
| DLBMBF | S45C | Black Oxide | SS400 | Trivalent Bright Chromate |
| DLBMFN | Equivalent | Electroless Nickel Plating | SS400 | Trivalent Bright Chromate |
| DSLBMFN | DSUS304 | - | SUS304 Equivalent | - |

When assembling rod end bearings, check M-Pitch.

One End Threaded One End Tapped



| Type | M Material | S Surface Treatment | A Accessory | |
|--------|------------|----------------------------|-------------------|---------------------------|
| | | | M Material | S Surface Treatment |
| DLGBBF | S45C | Black Oxide | SS400 | Trivalent Bright Chromate |
| DLGBF | Equivalent | Electroless Nickel Plating | SS400 | Trivalent Bright Chromate |
| DSLGBF | DSUS304 | - | SUS304 Equivalent | - |



One End Threaded One End Tapped

| Part Number | M | L | L1 | l | l1 | B | (C) |
|---------------------------|----------|---------------|----|----|----|----|------|
| Type | (Coarse) | 1mm Increment | | | | | |
| DLGBBF DLGBF DSLGBF | 3 | 40~300 | 15 | 14 | 9 | 6 | 6.9 |
| | 4 | 50~400 | 20 | 18 | 12 | 7 | 8.1 |
| | 5 | 60~600 | 25 | 23 | 16 | 8 | 9.2 |
| | 6 | 70~600 | 30 | 28 | 18 | 10 | 11.5 |
| | 8 | 90~1000 | 40 | 37 | 24 | 13 | 15 |
| | 10 | 110~1000 | 50 | 47 | 30 | 17 | 19.6 |
| | 12 | 130~1000 | 60 | 56 | 36 | 19 | 21.9 |
| | 14 | 130~1000 | 60 | 56 | 36 | 21 | 24.1 |
| | 16 | 170~1000 | 80 | 76 | 48 | 24 | 27.7 |
| | 18 | 170~1000 | 80 | 76 | 56 | 27 | 31.2 |

| Alterations | Code | Spec. |
|-------------|------|--|
| | RLC | Reverses thread twist direction of each for One End Threaded, One End Tapped Type. Ordering Code RLC |
| | PMC | Changes both threads to fine threads. Alteration is available for M10, 14, 18, 20 and 22 only. Ordering Code PMC |

| M(N) | Pitch | M(N) | Pitch |
|------|-------|------|-------|
| 10 | 1.25 | 20 | |
| 14 | 1.5 | 22 | 1.5 |
| 18 | | | |

For minimum L dimension, a tapped pilot hole may go through.

When assembling rod end bearings, check M-Pitch

Basic Specifications

Type - Both Ends Threaded



L
DLBMBF5 - 225



L (RLC, PMC)
DLBGBF5 - 100 - RLC

ORDERING GUIDE



www.dymextech.com
india@dymextech.com