

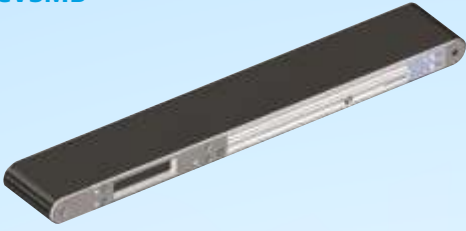
Flat Belt Conveyors - Built-in Motor Type - 2-Groove Frame



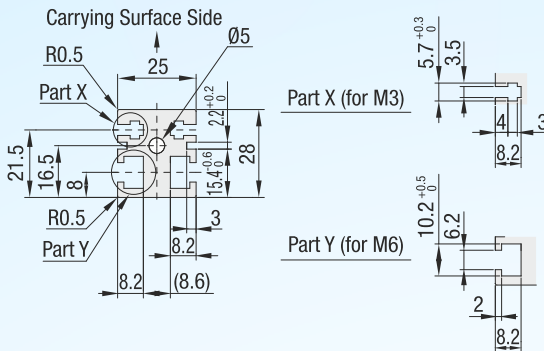
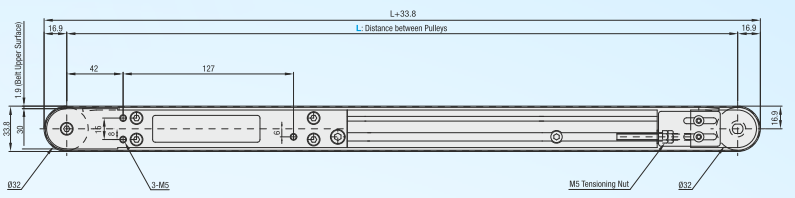
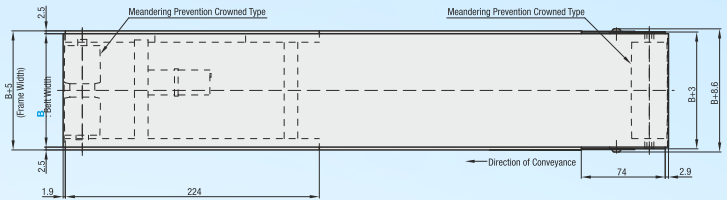
- Features:** The unit height has been restrained with the built-in motor between frames; 53% lower than that of DCVSMA, with the adoption of a compact type motor.

- When it is necessary to operate a conveyor in a stand-alone state, select DSWR (Include Switch Mode Power Supply) for Alteration.

DCVSMB

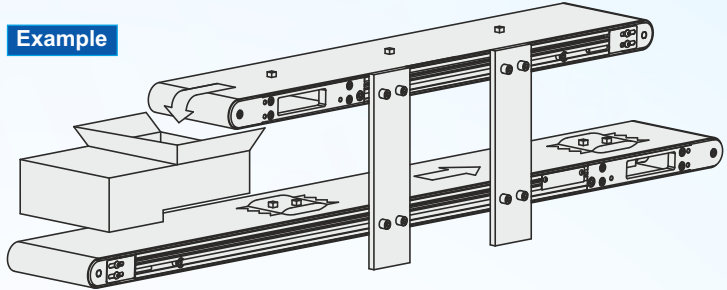
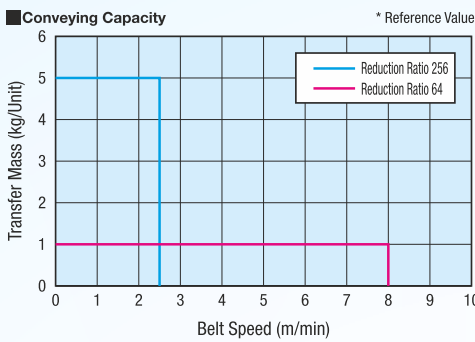


	Frame	Pulley Holder (1)	Pulley Holder (2)
M Material	Aluminum	Aluminum	SS400
S Surface Treatment	Painted	Painted	Trivalent Chromate



* Each slot has four (4) M6 nuts inserted. When $L \leq 405$, three (3) nuts are inserted. When counterbores for inserting nuts are required, so specify in form of alteration ordering.

- The dimensions in the diagram is for Belt Specification H (0.9mm THK). Note that belt thickness varies by Belt Specifications. For Belt Specifications
- On some operating environments, conveyance failure may occur.



Part Number	B 10 mm Increment	L 5 mm Increment	Motor			Belt Specification	Part Number	B 10 mm Increment
			Output (W)	Voltage (V)	Specification			
DCVSMB	70~300	370~2000	3.5	Dc24 (Direct Current)	SCM (Variable Speed) ND (No Motor Driver)	64 256	H (General Purpose, Green) W (General Purpose, White) G (For Sliding, Green) S (For Sliding, White) D (For Electronic Parts Transfer, Black) F (For Food Transfer, White) O (Oil Resistant, Navy Blue) N (Non-adhesive, White) J (No Belt)	70~100
				NV (No Motor)	NM (No Motor)			NH (No Gearhead)

For orders larger than indicated quantity, please check with WOS
For orders larger than indicated quantity, please check with WOS

Belt Specification	Standard Belt (Body Price Only)	Optional Belt 1	Optional Belt 2	No Belt
General Purpose	H (Green), W (White), HG (Green)	-	-	J (No Belt)
For Sliding	G (Green), S (White)	-	-	
For Inclined Transfer	-	-	-	
Grip Type	-	GG (Green), GW (White)	-	
Oil Resistant	O (Navy Blue), OH (Green), OG (Green)	OW (White)	-	
Non-adhesive	N (White), NS (White)	NB (Sky Blue), NBG (Lime Green), HH (Green), HW (White)	-	
For Food Transfer	F (White)	KW (White), KSB (Sky Blue)	-	
For Electronic Parts Transfer	D (Black), DS (Black)	-	-	

- Since only the transporting surface side is designed to be oil resistant, Oil Resistant Types are not useable on environments where it is very likely that oil adheres to the back face.



DCVSMB - 100 - 1000 - 3.5 - Dc24 - SCM - 256 - H - DA

ORDERING GUIDE

