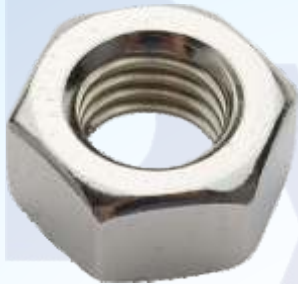
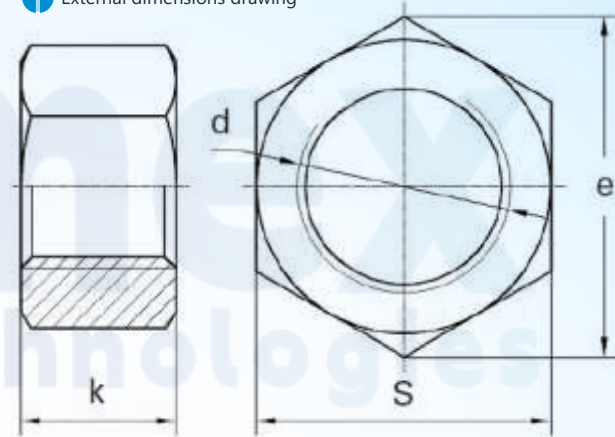


# Hex Nuts DIN934



External dimensions drawing



Hex Nut  
 Material: Stainless Steel 304 / Stainless Steel 316 / Carbon Steel available  
 Surface Treatment: No surface treatment fManufacturing Standard: DIN934

Screw Size d	M1.6	M2	M2.5	M3	M4	M5	M6	M8	M10	M12	M14	M16	M18	M20	M22	M24	
<b>P</b>	0.35	0.4	0.45	0.5	0.7	0.8	1	1.25	1.5	1.75	2	2	2.5	2.5	2.5	3	
<b>K</b>	Maximum = Nominal	1.3	1.6	2	2.4	3.2	4	5	6.5	8	10	11	13	15	16	18	19
	Minimum Value	1.05	1.35	1.75	2.15	2.9	3.7	4.7	6.14	7.64	9.64	10.3	12.3	14.3	14.9	16.9	17.7
<b>S</b>	Maximum = Nominal	3.2	4	5	5.5	7	8	10	13	17	19	22	24	27	30	32	36
	Minimum Value	3.02	3.82	4.82	5.32	6.78	7.78	9.78	12.73	16.73	18.67	21.67	23.67	26.16	29.16	31	35
<b>e</b>	Minimum Value	3.41	4.32	5.45	6.01	7.66	8.79	11.05	14.38	18.9	21.1	24.49	26.75	29.56	32.95	35.03	39.55

## Basic Specifications

- Thread Type - Metric, Coarse
- Unit of Purchase - Unit of Purchase
- Hex Nut Standard - JIS Class 2
- Applications, Functions - Standard

ORDERING GUIDE



DE-PACK-DIN934-STZ4(1000)