

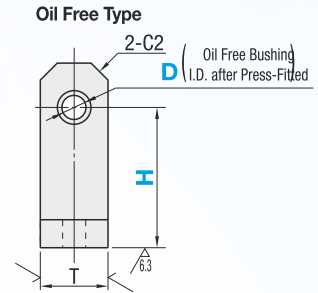
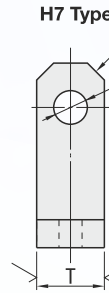
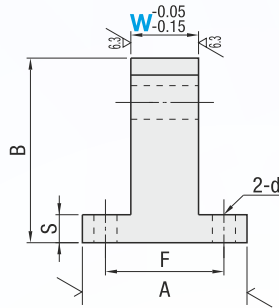
# Hinge Bases - Standard T Shaped

● Features: T-Shaped and Height Configurable at 1 mm Increment. Oil Free Type is also available



W Dimension Fixed Type		W, H Dimension Configurable Type		M	S
H7 Type	Oil Free Type	H7 Type	Oil Free Type	Material	Surface Treatment
DHKTB	DHKTBM	DHGBBR	DHGBTBM	S45C Equivalent	Black Oxide
DHKTM	-	DHGBMR	-		Electroless Nickel Plating
DHKTS	-	DHGBSR	-	SUS304 Equivalent	-

25/(√6.3/1.6/)



Type	Part Number			H 1mm Increment	W	A	F	B	S	T	d	Oil Free Bushing			
	D	H7 Type D Tolerance	Oil Free Type D Tolerance (Reference)									d (L.D)	L Overall Length		
(H7) HKTB HKTM HKTS (Oil Free) HKTBM	2	+0.010	-	15~20	4	22	15	H+3	5	6	3.5	-	-		
	3	0	-	15~25	6	25	17	H+5				9	4.5	4	6
	4	+0.0120	+0.0620	20~30	8	32	23	H+6				12	5.5	5	6
	5	0	+0.0650	25~35	10	38	27	H+8	10	16	5.5	6	8		
	6	+0.0150	+0.0680	30~40								8	8		
	8	0	-	35~45	10	10	10	8							
	10	+0.0180	-	40~50	12	12	12	10							
	12	0	-		16	16	16	10							
	13	+0.0180	-		20	20	20	10							
	14	0	-		25	25	25	10							
	15	+0.0210	-		30	30	30	10							
	16	0	-		35	35	35	10							
	20	+0.0210	-		40	40	40	10							
	25	0	-		50	50	50	10							

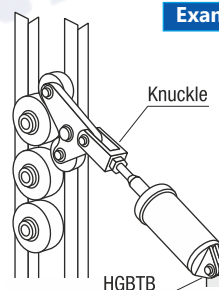
D	W	d (L.D.)	L (Overall Length)
4	5	4	4
4	6	4	5
4	8	4	6
5	5	5	4
5	6	5	5
5	8	5	6
5	9	5	8
5	10	5	8
6	6	6	5
6	8	6	6
6	9	6	8
6	10	6	8
6	12	6	10
8	8	8	6
8	9	8	8
8	10	8	8
8	12	8	10
8	14	8	12
8	15	8	12
8	16	8	15
10	10	10	8
10	12	10	10
10	14	10	12
10	15	10	12
10	16	10	15
10	18	10	15
10	12	12	10
12	14	12	12
12	15	12	12
12	16	12	15
12	18	12	15
13	14	13	12
13	15	13	12
13	16	13	15
13	18	13	15
13	20	13	15
13	22	13	20
13	24	13	20
15	15	15	12
15	16	15	15
15	18	15	15
15	20	15	15
15	22	15	20
15	24	15	20
16	16	16	15
16	18	16	15
16	20	16	15
16	22	16	20
16	24	16	20

Type	Part Number			H7 Type		Oil Free Type		A	F	B	S	T	d		
	D	H7 Type D Tolerance	Oil Free Type D Tolerance (Reference)	W 1mm Increment	H 5mm Increment	W Selectable	H Fixed								
(H7) DHGBTB DHGBTM DHGBTS (Oil Free) DHGBTBM	2	+0.010	-	3~5	15~20	-	-	22	15	H+3	5	6	3.5		
	3	0	-	3~6	15~25	-	-	25	17	H+5				9	4.5
	4	+0.0120	+0.0620	4~8	20~30	4 5 6 8	20	32	23	H+6				12	5.5
	5	0	+0.0650	5~10	25~35	5 6 8 9 10	25	38	27	H+8	16	19	6.5		
	6	+0.0150	+0.0680	6~12	30~40	6 8 9 10 12	30	50	37	H+10	10	22	9		
	8	0	-	8~16	35~45	8 9 10 12 14 15 16	35	65	49	H+12	15	25	9		
	8	+0.0150	-	10~18	40~50	10 12 14 15 16 18	-	-	-	H+14	-	-	-		
	10	0	-	12~18		12 14 15 16 18	-	-	-	H+17	-	-	-		
	12	+0.0180	-	13~24		14 15 16 18 20 22 24	-	-	-	-	-	-	-		
	13	0	-	14~24		-	-	-	-	-	-	-	-		
	14	+0.0180	-	15~24		15 16 18 20 22 24	-	-	-	-	-	-	-		
	15	0	-	16~24		16 18 20 22 24	-	-	-	-	-	-	-		
	16	+0.0210	-	20~30		-	-	-	-	-	-	-	-		
	20	0	-	25~35		-	-	-	-	-	-	-	-		
	25	0	-			-	-	-	-	-	-	-	-		

● For detailed dimensions of Hinge

## Basic Specifications

- Type - Hinge Base
- Characteristics/Applications - Not Applicable
- Environmentally friendly - RoHS Compliant (10 Substances)
- Shape - T-Shaped
- Mounting Position - Standard Type



## ORDERING GUIDE



Part Number	D	H
DHKTB13	-	H35
DHGBTB10	W15	H30
DHGBTBM4	W6	-