

Links - Standard Type

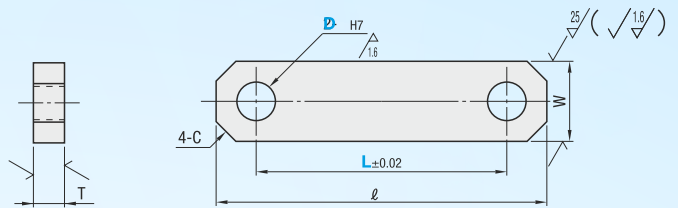
● **Features :** Two-Hole Type Standard specifications - Selectable and Configurable are available.

L Selectable	D2 Configurable	W Configurable	Type R	M Material	S Surface Treatment
DLNSB	DLNDB	DLNFB	DLFRB	S45CEquivalent*	Black Oxide
—	DLNDM	DLNFM	DLNFRM		Electroless Nickel Plating
DLNSS	DLNDS	DLNFS	DLNFRS	SUS304	—

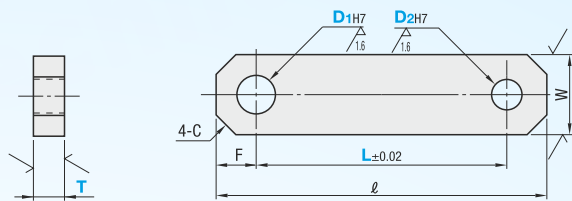
*SS400 FOR T=2.



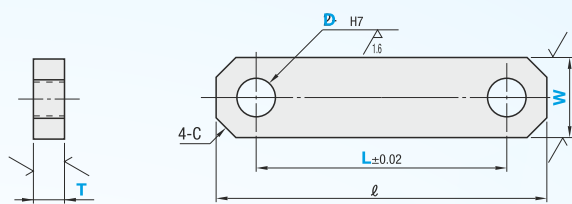
L Selectable



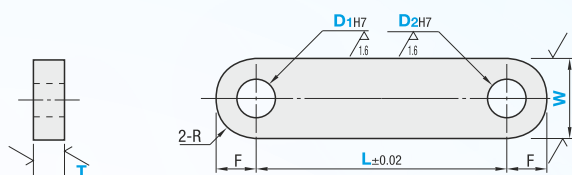
D2 Configurable



W Configurable



Type R



T Dimension Tolerance

T	2	3~16	19~22
	±0.15	0 -0.3	0 -0.33

● L Selectable

Part Number		L Selection					W	T	l	C
Type	D _{H7}	25	30	40	50					
DLNSB DLNSS	5	25	30	40	50	13	5	L+13	3	
	6	25	30	35	40					45
	8	25	30	35	40	45	50	75	L+16	
	10	30	40	50	75	16				
12				50	75	19	9	L+19	5	

● D₂ Configurable

Part Number		D _{2H7} 1mm Increment	L 1mm Increment	T Selection	W	l	F	C
Type	D _{1H7}	2~20 D ₁ ≥ D ₂	5~75	2 3				
DLNDB DLNDM DLNDS	2	● When D _{2H7} =2, T ≤ 9	5~75	2 3	8	L+8	4	2
	3		5~150	5 6				
	4		6~150	5 6 9				
	5		7~150	5 6 9	13	L+10	5	3
	6		8~150	5 6 9				
	8		10~150	5 6 9	16	L+12	6	5
	10		12~200	5 6 9				
	12		14~200	5 6 9 12	19	L+16	8	3
	13		15~200	5 6 9 12				
	14		16~200	5 6 9 12	25	L+18	9	5
	15		18~200	5 6 9 12				
	16		20~200	5 6 9 12 16	32	L+20	10	8
	18		22~200	9 12 16				
	20		25~300	9 12 16 19	38	L+24	12	5
	25		30~300	9 12 16 19				

W Configurable

Part Number		L 1mm Increment	W 1mm Increment	T Selection	l	C		
Type	D _{H7}	10~75	7~12	2 3				
DLNFB DLNFM DLNFS	2	● When D _{2H7} =2, T ≤ 10	10~150	10~20	L+8	2		
	3						5 6	
	4						5 6 9	
	5				5 6 9	13	L+10	3
	6				5 6 9			
	8				5 6 9 10	16	L+12	5
	10				5 6 9 10			
	12				5 6 9 10 12 16	19	L+16	3
	13				6 9 10 12 16			
	14				9 10 12 16	25	L+18	5
	15				9 10 12 16			
	16				9 10 12 16	32	L+20	8
	18				9 10 12 16			
	20				9 10 12 16 19	38	L+24	5
	25				9 10 12 16 19 22			

Type R

Part Number		D _{2H7} 1mm Increment	L 1mm Increment	W 1mm Increment	T Selection	l	C		
Type	D _{1H7}	2~20 D ₁ ≥ D ₂	20~75	6~12	2 3				
DLNFRB DLNFRM DLNFRS	2	● When D _{2H7} =2, T ≤ 10	20~150	6~12	2 3	W/2	W/2		
	3							7~20	5 6
	4							8~20	5 6 9
	5				9~20	5 6 9	13	L+10	3
	6				10~20	5 6 9			
	8				12~20	5 6 9 10	16	L+12	5
	10				16~30	5 6 9 10			
	12				18~30	5 6 9 10 12 16	19	L+16	3
	13				19~30	6 9 10 12 16			
	14				20~40	9 10 12 16	25	L+18	5
	15				21~40	9 10 12 16			
	16				22~40	9 10 12 16	32	L+20	8
	18				24~40	9 10 12 16			
	20				30~50	9 10 12 16 19	38	L+24	5
	25				35~60	9 10 12 16 19 22			

● Basic Specifications

■ Number of Holes - 2 pcs.

Part Number - D₂ - L - W - T

DLNSB5 - L25 -
DLNDB10 - 8 - L100 - T6
DLNFB10 - L60 - W20 - T9
DLNFRB8 - 6 - L100 - W15 - T9

D₂ - L(LC) - W - T
DLNFB10 - LC100.5 - W20 - T9

ORDERING GUIDE



www.dymex.com
india@dymex.com